

# I-75 (SR 93) from North of Sumter Boulevard to North of River Road (CR 777), Sarasota County

FPID# 413044-4-52-01

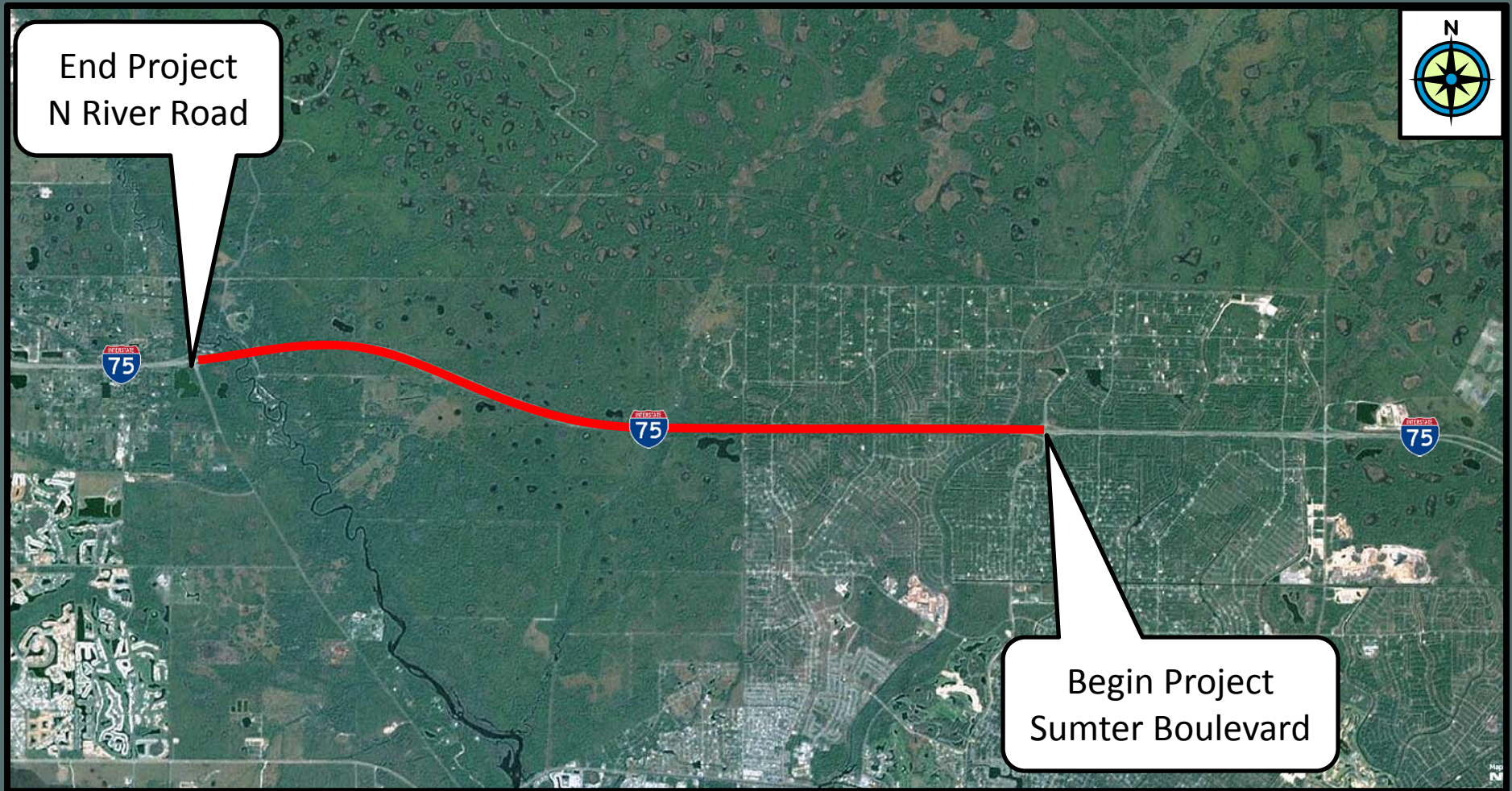
Presentation to the Myakka River Management Coordinating Council

February 1, 2013





# Location Map







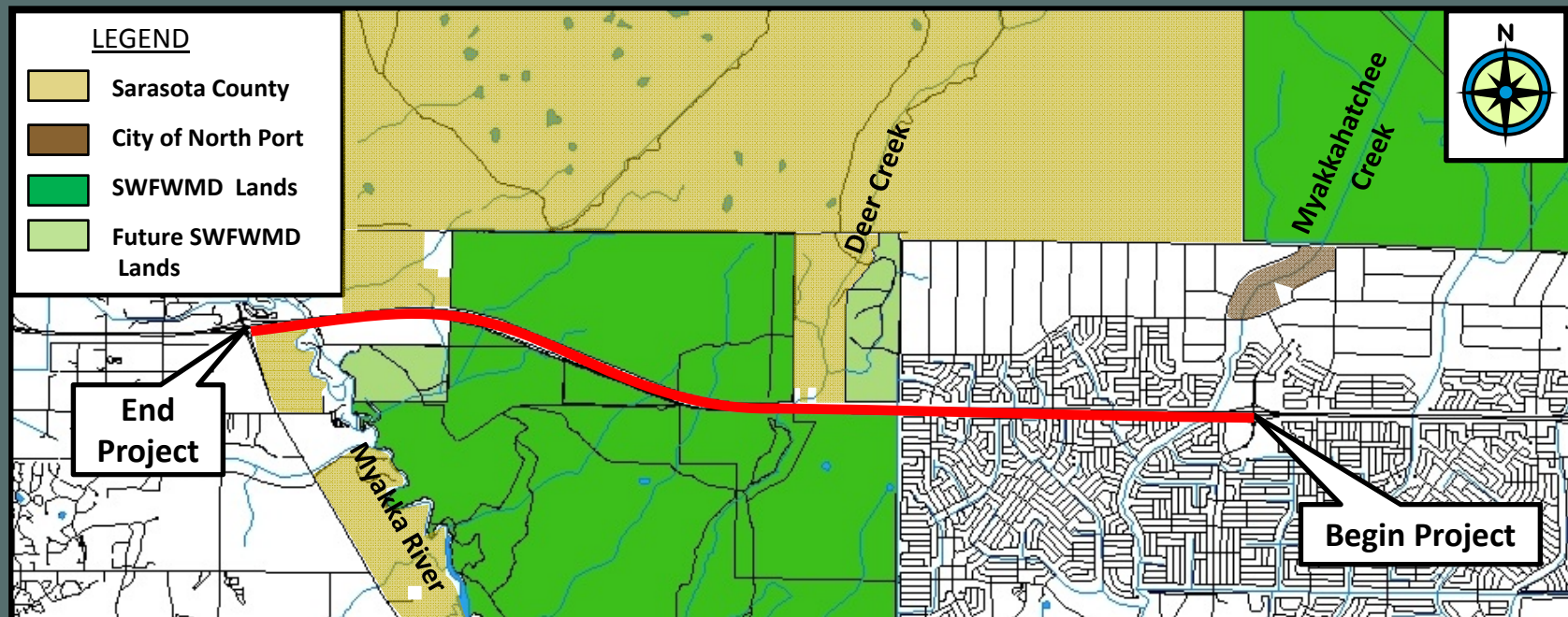
# Project Activities

- 9 miles of widening and resurfacing
- Pond design
- Permitting
- Public Involvement
- Widen Deer Prairie Creek bridges
- New lighting at Sumter Blvd. and River Rd.
- New signing & pavement markings
- Utility coordination & SUE
- ITS coordination
- Survey & R/W mapping
- Archaeological Clearances
- Geotechnical and contamination investigations



# Conservation Lands

- Avoid impacts to conservation lands
- All ponds within FDOT right of way



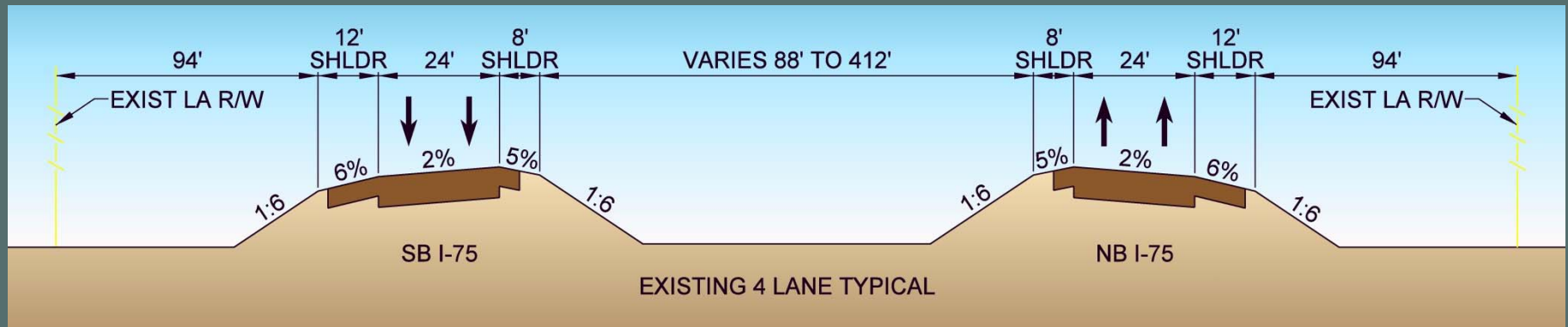


# Coordination

- City of North Port
- Department of Environmental Protection
- Myakka River Management Coordinating Council
- Sarasota County
- SWFWMD
- SWFWMD Lands Management
- Utilities



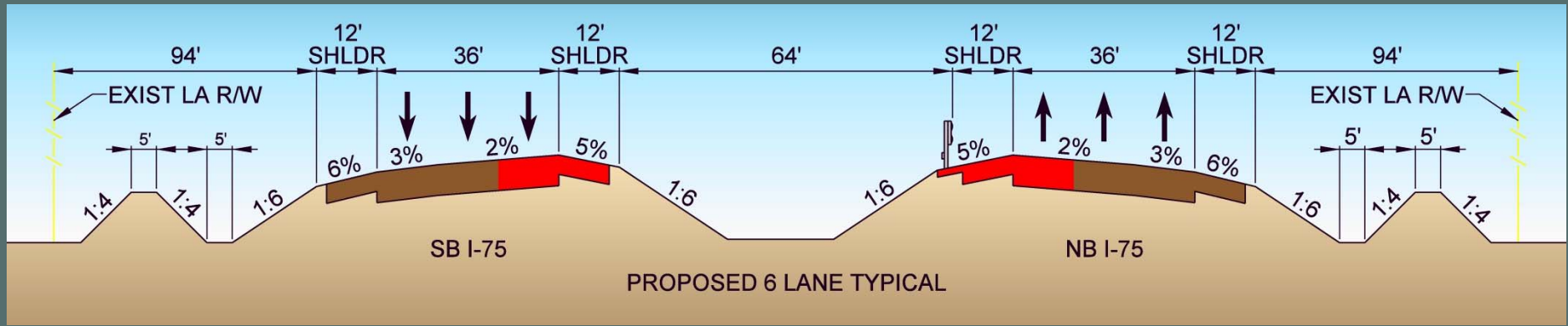
# Existing Four-Lane Typical Section



- Median width varies from 88 feet to 412 feet
- Posted speed = 70 MPH



# Typical Six-Lane Section



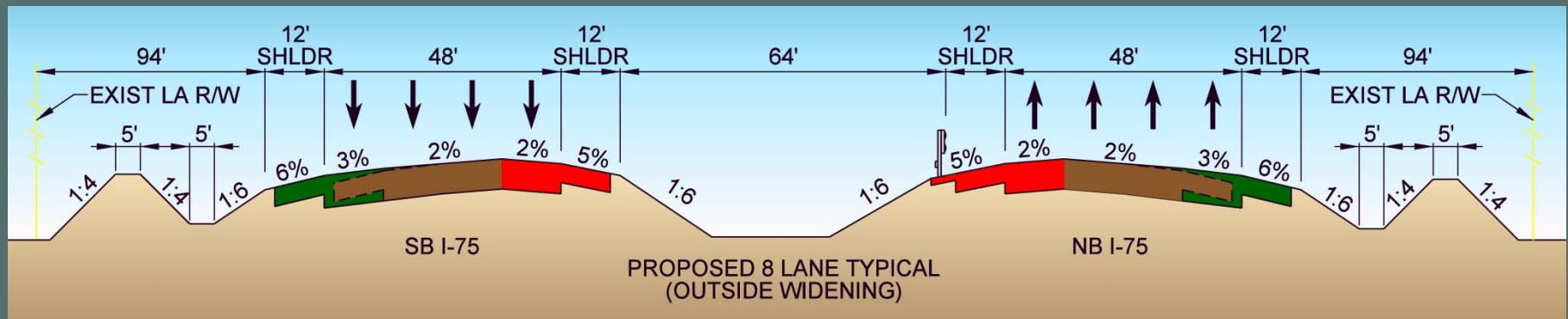
- 22 feet of pavement widening to the inside
- 10-foot paved inside and outside shoulders
- Median width:
  - 64 feet north of the bifurcated section
  - 90 feet south of bifurcated section







# Future Eight-Lane Widening



- Northern two miles widen to outside
- Horizontal transition in curve



# Safety Upgrades

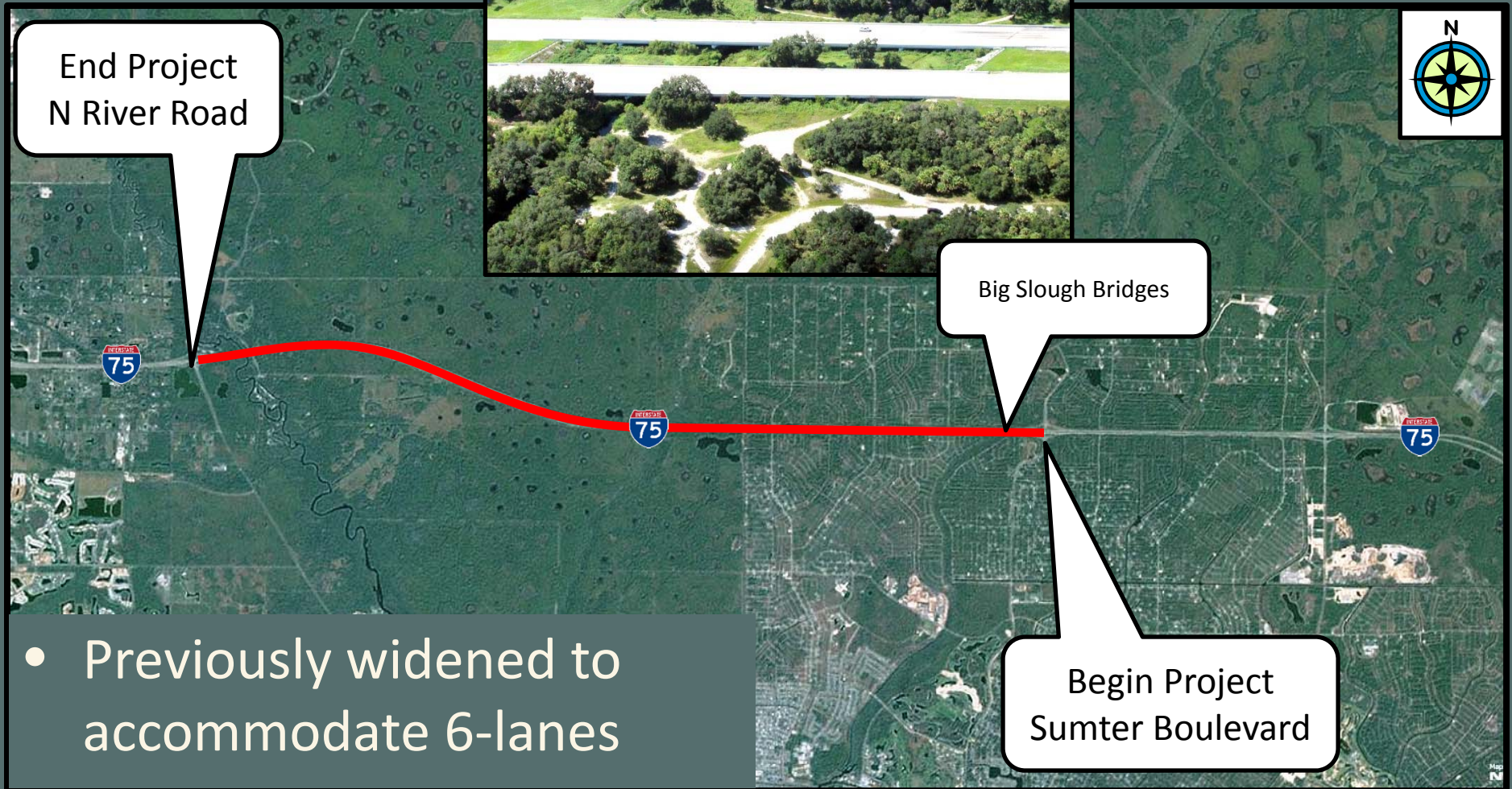
- Update guardrail end treatments/bridge connections
- Install guardrail at Ponce de Leon bridge







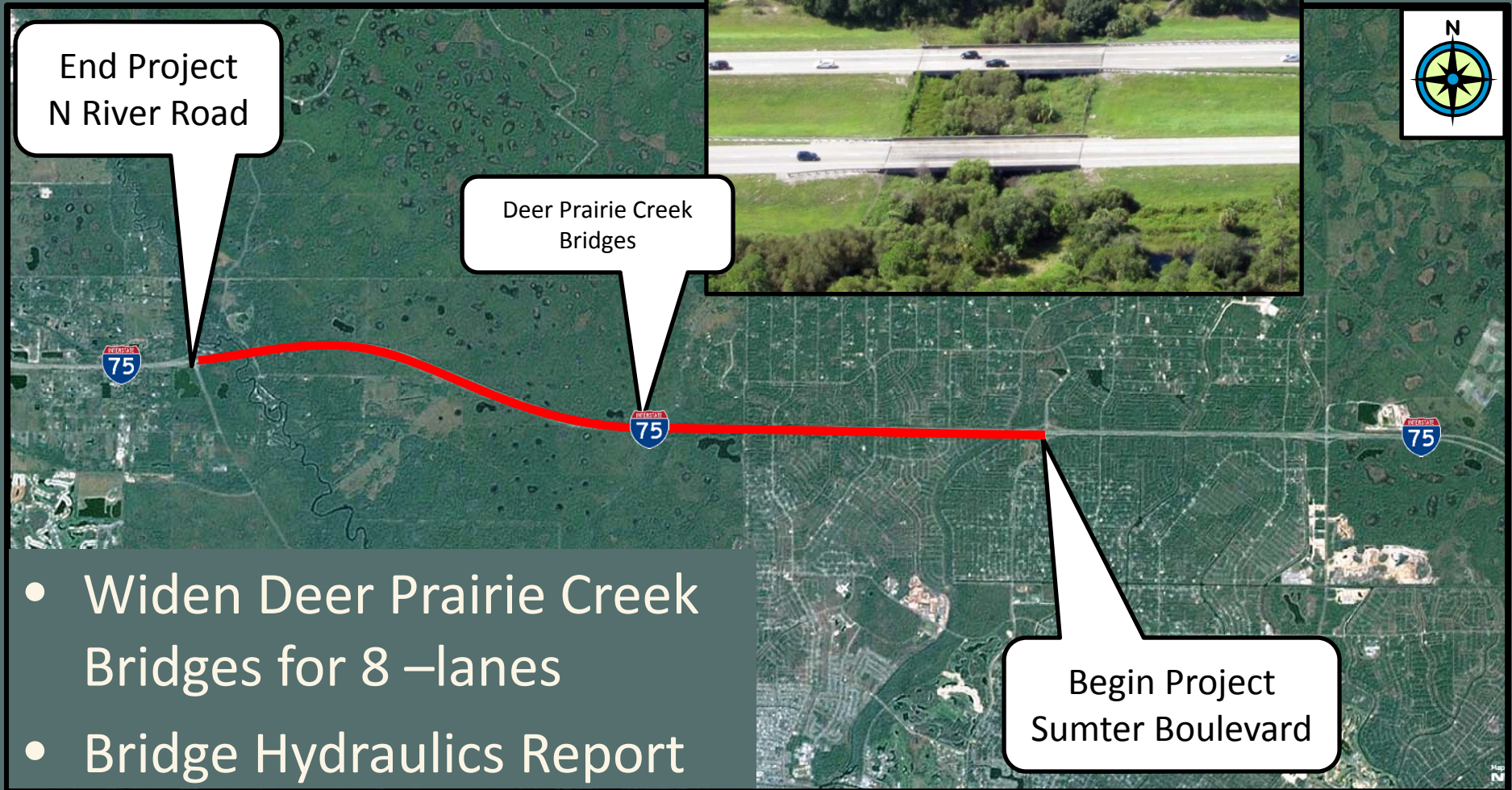
# Big Slough Bridges







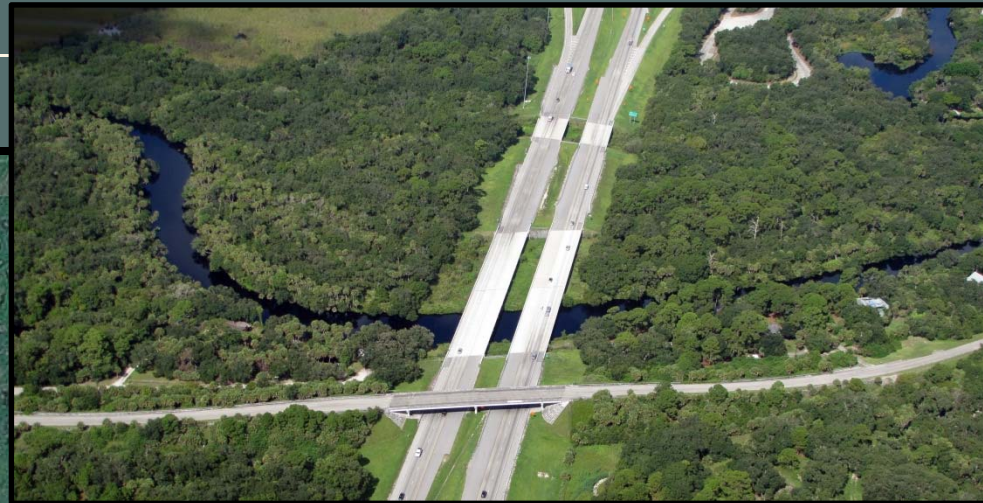
# Deer Prairie Creek Bridges







# Myakka River Bridges



End Project  
N River Road

Myakka River Bridges

Begin Project  
Sumter Boulevard

- Previously widened to accommodate 6-lanes





# Culvert Extensions

- Lengthening as needed

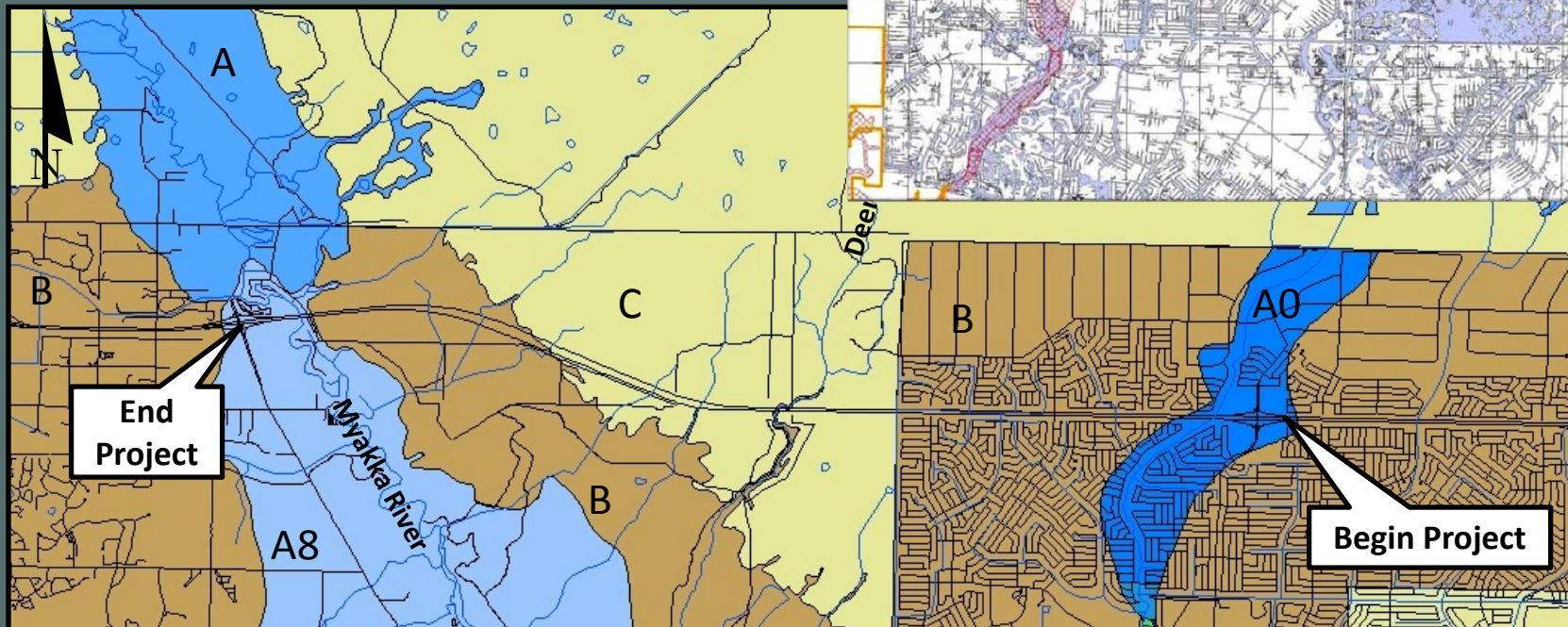






# FEMA 100-Year Floodplain

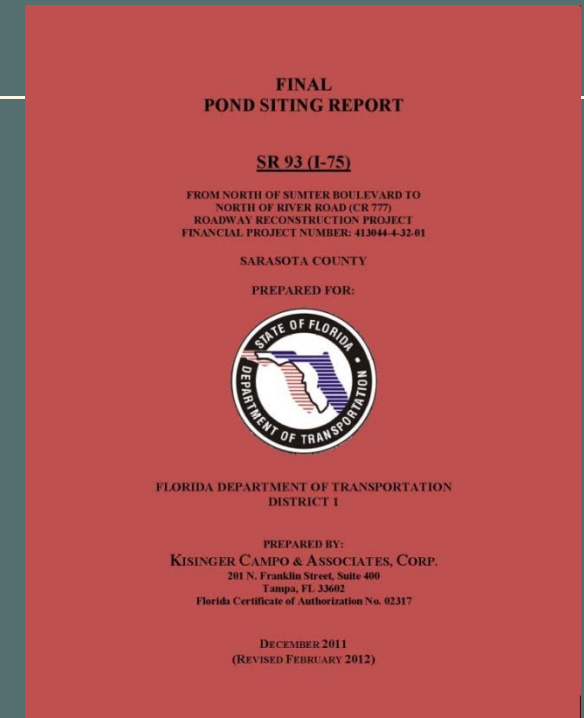
- Use latest models (Big Slough, Lower Myakka River)
- Compensate for floodplain impacts



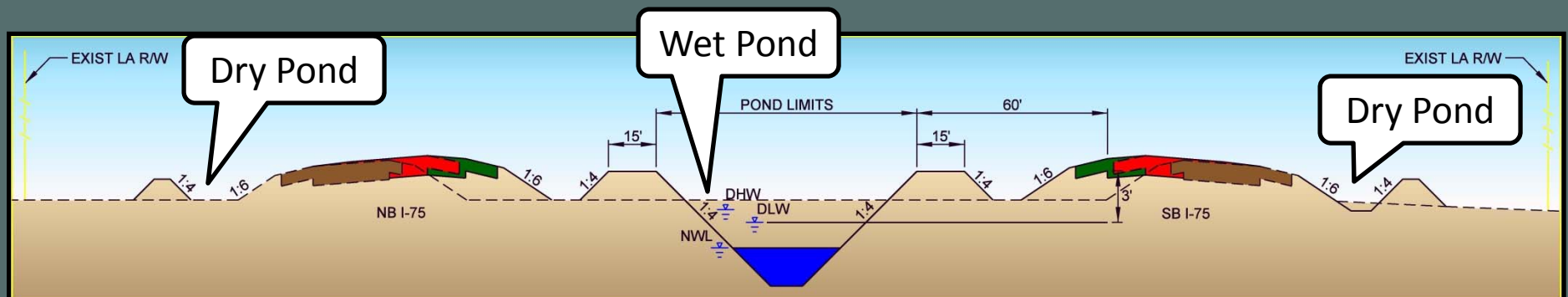


# Pond Siting Report

- Design for future eight lanes
- Wet detention ponds
- Dry retention ponds



All ponds within FDOT right of way







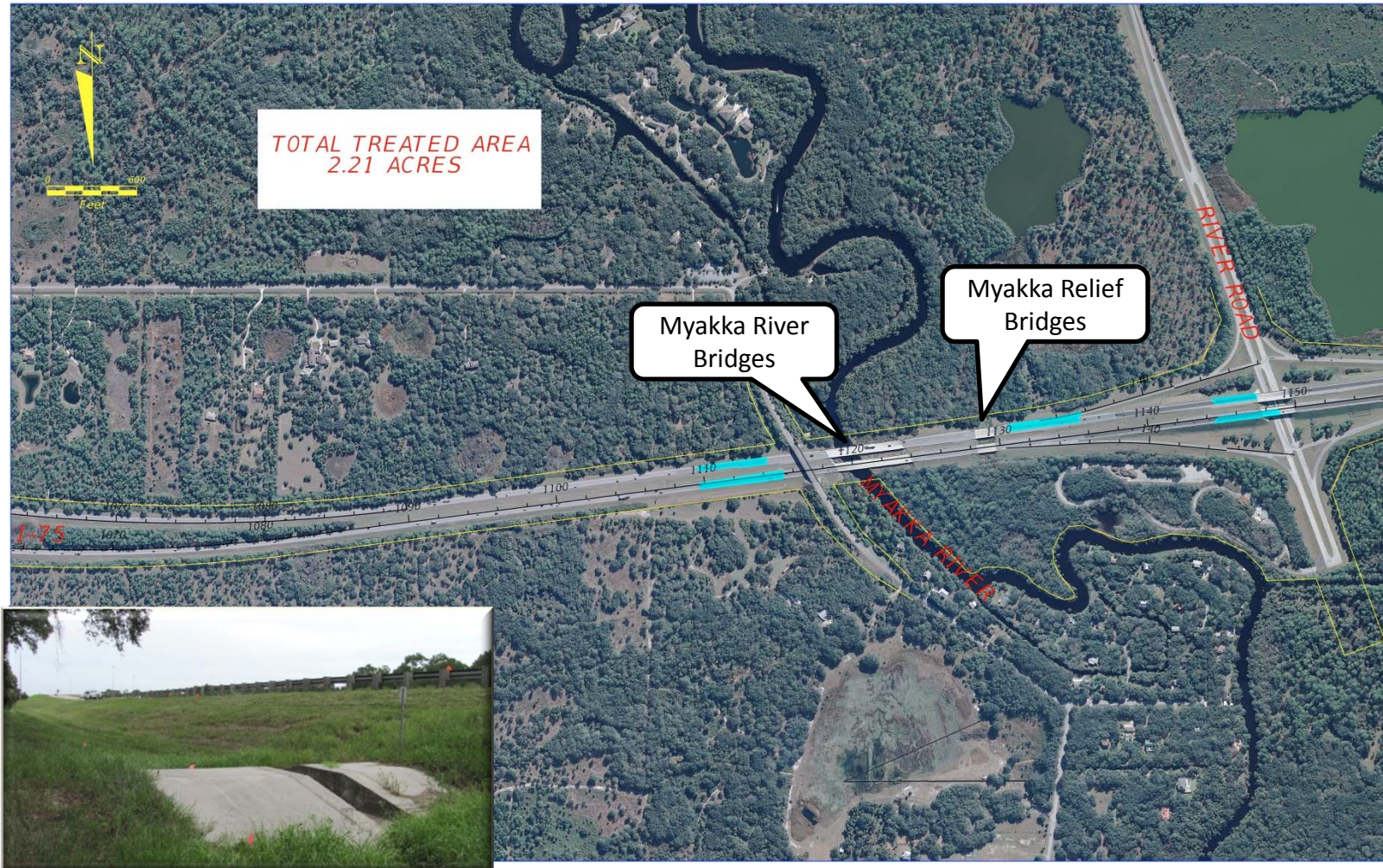
# Pond Design Criteria

- Stormwater Quality
  - Wet detention – 1.5" runoff from DCIA
  - Dry retention – 0.75" runoff from DCIA
  - Additional 50% treatment for Myakka River (OFW)
- Stormwater Quantity (Open basin)
  - SWFWMD 25-yr/24-hr pre-post discharge rate





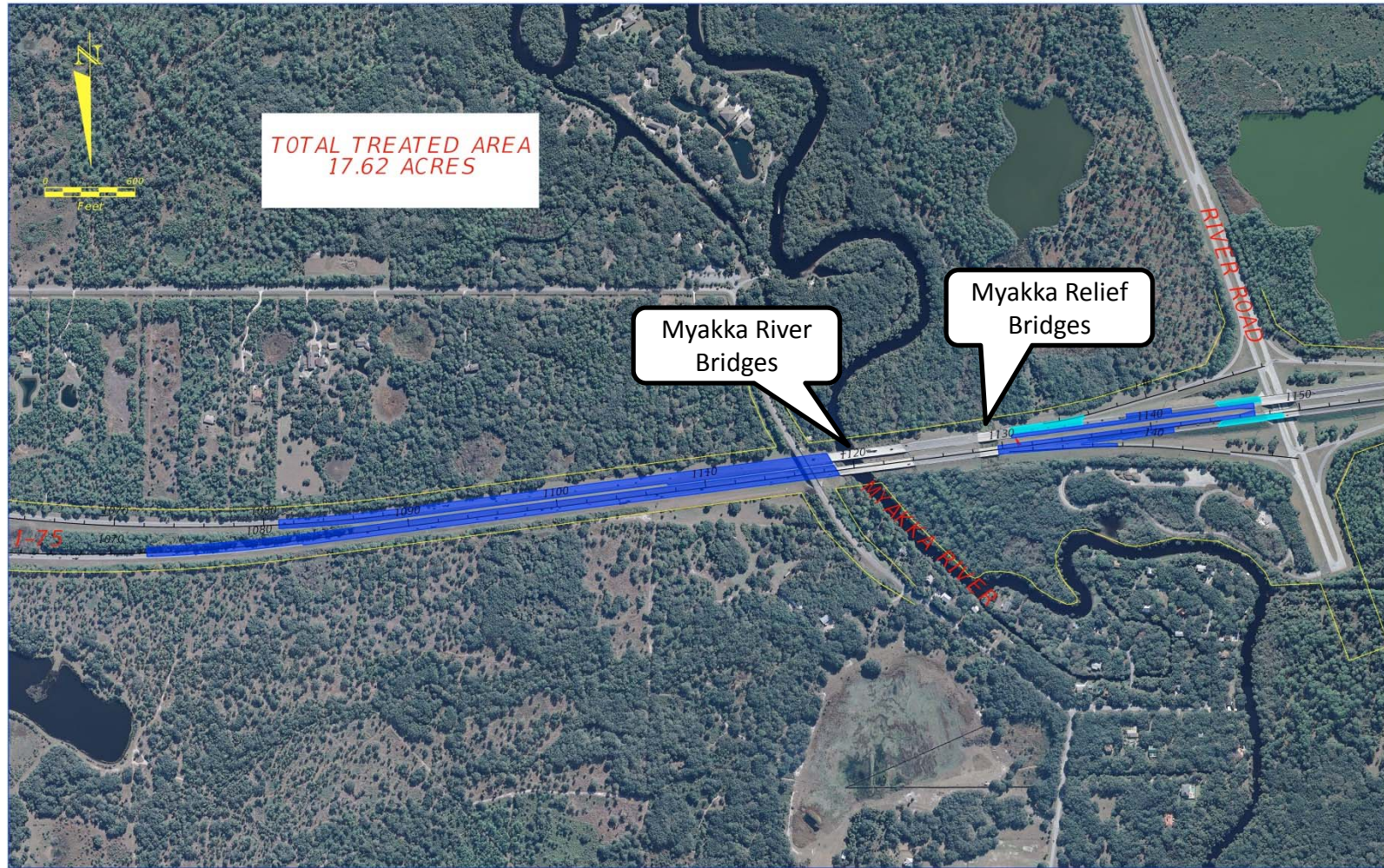
# Existing Treated Pavement – Myakka River







# Proposed Treated Pavement- Myakka River

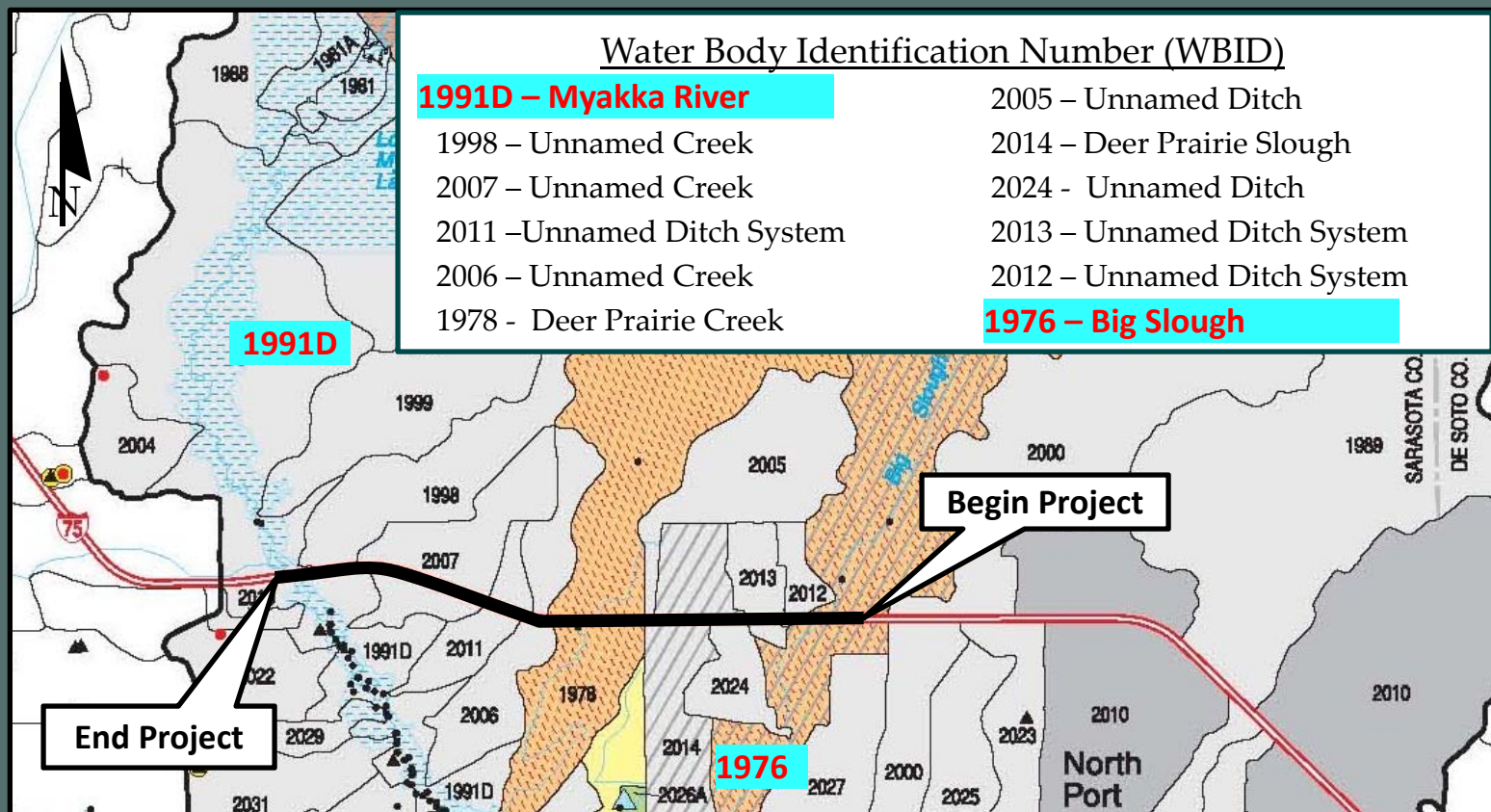






# Water Quality

- Total Maximum Daily Loads (TMDLs)
- Group 3 – Lower Myakka River

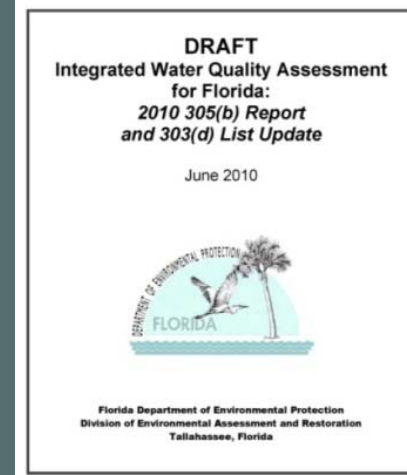
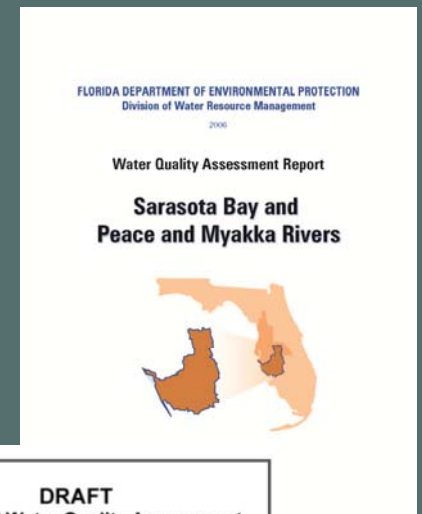






# Water Quality

- Total Maximum Daily Loads (TMDL)
  - Big Slough Canal (#1976)
    - Dissolved Oxygen (DO) – **Verified**
  - Myakka River (#1991D)
    - Outstanding Florida Water
    - Nutrients (Nitrogen) – **Verified List 2010**
    - Mercury in Fish – **Verified List 2010**
- Nutrient Loading Calculations show no adverse impact





# Wetlands

- Types
  - Wet prairies/marshes
  - Scrub shrub
  - Forested





# Wetlands & Surface Waters

- Temporary Impacts = 3.3 acres
- Permanent Impacts = 6.5 acres
- Myakka Mitigation Bank





# Protected Species

- Multiple species
  - Florida panther
  - Florida scrub jay
  - Wood stork
  - Eastern indigo snake
  - West Indian manatee
  - Bald eagle
  - Gopher tortoise
  - Florida sandhill crane







# Environmental Permits

- Army Corp of Engineers
  - Individual 404 Dredge and Fill Permit
- Southwest Florida Water Management District
  - Individual Environmental Resource Permit
- Florida Department of Environmental Protection
  - NPDES SWPPP
- Florida Fish and Wildlife Conservation Commission
  - Gopher tortoise relocation





# Schedule

- 30% Plans – January 31, 2012
  - 60% Plans – June 29, 2012
  - 90% Plans – November 6, 2012
  - 100% Plans – January 28, 2013
  - Final Plans – March 7, 2013
  - Letting – June of 2013
- 
- SWFWMD Submittal – September 5, 2012
  - SWFWMD Permit Complete – November 20, 2012





# Questions and Answers

